

IRIS Dialler Configuration Software Enhancements and Additions from V2.1.0.9 to V2.1.0.14

Overview

This document details enhancements to the feature set of the IRIS Dialler Configuration Software from Version 2.1.0.9 to Version 2.1.0.14.

This software is now available free of charge from the Chiron security website, www.chironsc.com.

Although all standard IRIS Touch configuration operations can be carried out via the integral touch screen on the IRIS Touch diallers, there are additional functions that can be carried out by using Chiron's Dialler Configuration software on a laptop connected to the dialler directly or from a PC in the installer's office remotely connected over IP. The Dialler Configuration software is a valuable tool for installers who carry a laptop as it allows additional functions to be performed:

- 1) Configuration of IRIS Touch 6xx diallers that do not have an integral touch screen.
- 2) Importing and exporting complete configuration setups – allows an installer to take a digital record of what was set up on site and to restore it should a replacement dialler be required.
- 3) Access to high level diagnostics within the diallers.

How to Download

The installation program can be downloaded from Chiron Security Communications web site at www.chironsc.com. Select Installers, then Downloads, then Software Downloads.

Double click IRIS Touch Remote Configuration Software and save the file to your PC. Decompress the file, double click on setup.exe and follow the instructions.

Chiron Security Communications Ltd

Wyvols Court, Swallowfield, Reading
Berkshire RG7 1WY, United Kingdom
Telephone: +44 0118 988 0228
Facsimile: +44 0118 988 1055
www.chironsc.com
Email: sales@chironsc.com

Registered office number: 6031811



Chiron Security Communications Ltd, 2015, Reading, RG7 1WY, UK

Enhancements and Additions

Window 7 64Bit Support

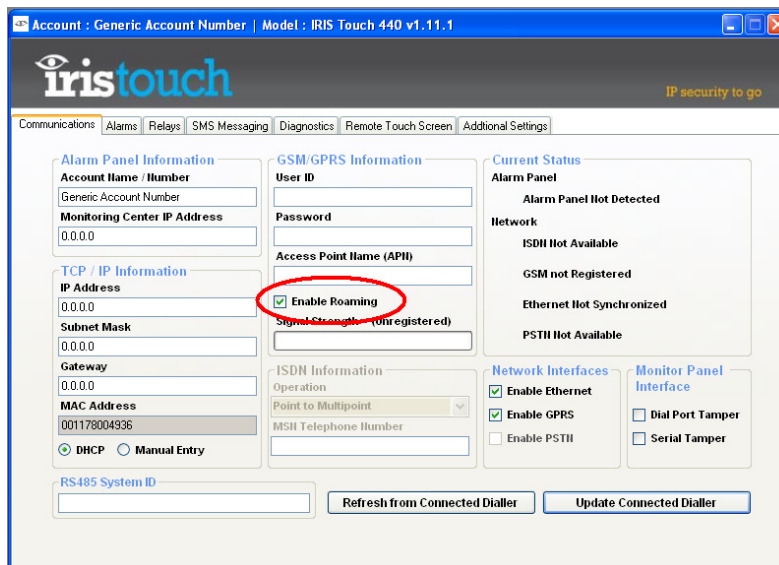
- The USB driver used by the IRIS Dialler Configuration software has been upgraded to support Windows 7 64 bit operating systems.

New Dialler Models Supported

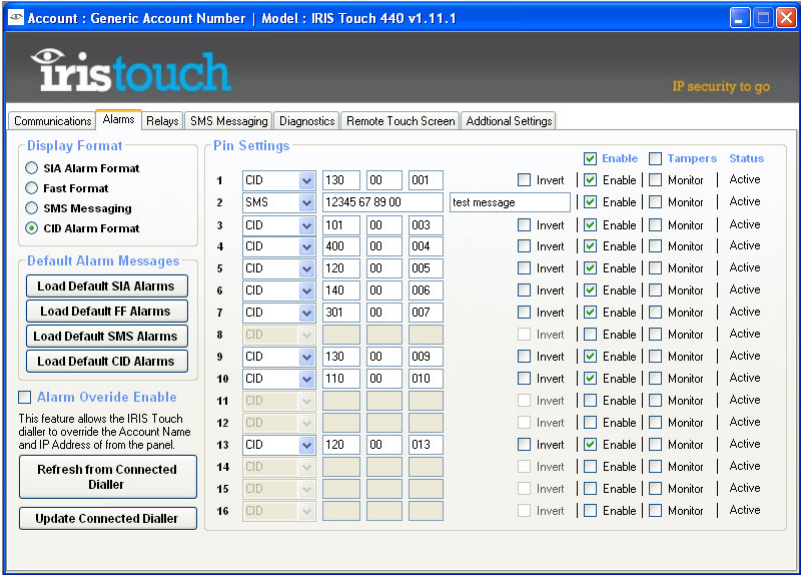
- Additional support has been added for the configuration of IRIS Touch 100, and IRIS Touch 120 model diallers.

Support for V1.12 IRIS Dialler Firmware

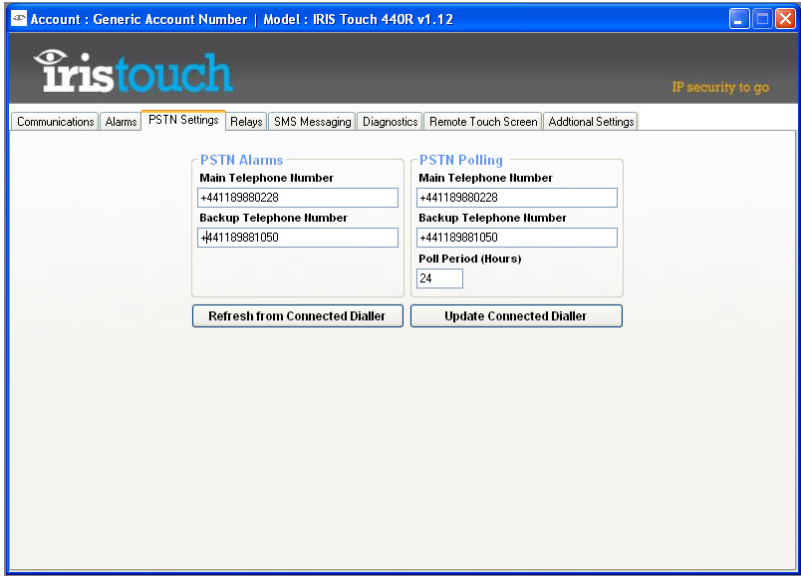
- The communication screen now has an option to enable or disable the GSM / GPRS Enhanced Roaming feature that was introduced in version 1.11.1 of the IRIS dialler firmware.



- The “Alarms” tab has been improved to support Contact ID protocol alarms. This screen also now supports SMS format alarms being used for specific pins regardless of the main protocol selected. The option to disable a pin is now available for all protocols.



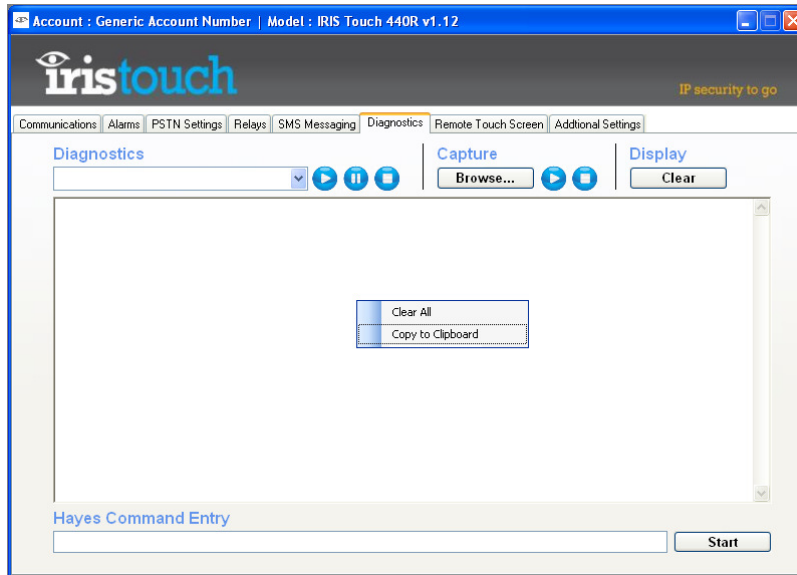
- PSTN Contact ID Alarms and PSTN Polling are now supported in version 1.12 of the IRIS Touch 440R firmware. An additional tab for the configuration of these settings is available in the dialler configuration software.



The PSTN Polling option is only available if the Dialler is configured to PSTN Only mode of operation, otherwise this configuration section will be greyed out.

Modifications to the terminal screen

- The terminal screen on the diagnostics page of the configuration software has also been upgraded. Now text can be recovered directly from the screen, regardless of whether the capture feature was enabled. Simply right click the terminal screen and click the “Copy to Clipboard” option.



The terminal screen will now also accept direct input of commands.