

IRIS Dialler Configuration Software Enhancements and Additions From Version 2.0.4 to Version 2.1.0.8

Overview

This document details enhancements to the feature set of the IRIS Dialler Configuration Software from Version 2.0.4 to Version 2.1.0.8.

This software is now available free of charge from the Chiron Security web site, www.chironsc.com.

Although all standard IRIS Touch configuration operations can be carried out via the integral touch screen on the IRIS Touch diallers, there are additional functions that can be carried out by using Chiron's Dialler Configuration software on a laptop connected to the dialler directly or from a PC in the installer's office remotely connected over IP. The Dialler Configuration software is a valuable tool for installers who carry a laptop as it allows additional functions to be performed:

- 1) Configuration of IRIS Touch 6xx diallers that do not have an integral touch screen.
- 2) Importing and exporting complete configuration setups – allows an installer to take a digital record of what was set up on site and to restore it should a replacement dialler be required.
- 3) Access to high level diagnostics within the diallers.

How to Download

The installation programme can be downloaded from Chiron Security Communications web site at www.chironsc.com. Select Installers, then Downloads, then Software Downloads.

Double click IRIS Touch Remote Configuration Software and save the file to your PC. Decompress the file, double click on setup.exe and follow the instructions.

Chiron Security Communications Ltd

Wyvols Court, Swallowfield, Reading
Berkshire RG7 1WY, United Kingdom
Telephone: +44 0118 988 0228
Facsimile: +44 0118 988 1055
www.chironsc.com
Email: sales@chironsc.com

Registered office number: 6031811
2nd Floor, Aquis House, 49-51 Blagrove Street
Reading, Berkshire RG1 1PL United Kingdom

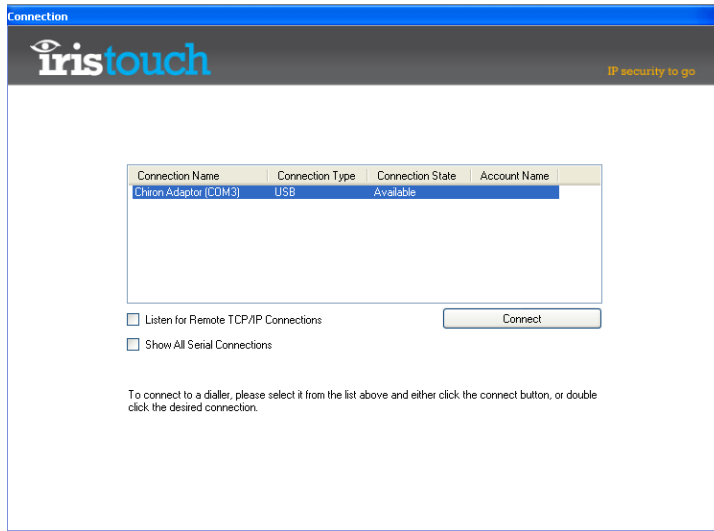
Chiron Security Communications Ltd
part of the Chi Holding group of companies 



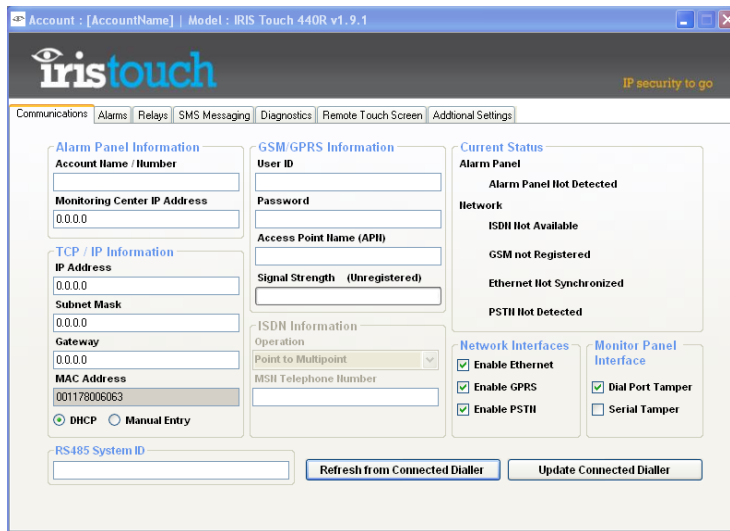
Enhancements and Additions

Ease of use

Improved connection screen that allows simultaneous connections.



Redesign of the tabs to group common features together:



Clearing of diagnostic screen on right click of mouse. The diagnostic screen allows more detailed diagnostics (e.g. for polling or alarm transmission) to be displayed for more unusual problem situations.

Handling of USB connection problems has been improved.

Other reported problems have been resolved.

New Features

- Additional settings available for Touch diallers (please note, the diallers should be at software version 1.9.2 or later for all these to be available):
 - Network interface selection.
 - Dial port monitoring.
 - Serial port monitoring.
 - For Galaxy panels, system ID configuration (required for older Galaxy panels – see Chiron’s installation guide for Galaxy panels).
 - Option to default pin input messages.
 - Enable/disable monitoring of pin inputs for tamper.
 - Enable/disable of pin inputs when used with Fast Format alarms.
- Button to reset dialler, which can be used for remote reboot.
- Remote touch screen operates over remote IP connection.
- Added support for GE TDA versions of IRIS diallers.

Security

Password entry now hidden by ‘*’ character.