

IRIS Touch Firmware Enhancements and Additions from Version 1.14.1 to Version 1.14.2

Overview

This document details enhancements to the feature set of the IRIS Touch from firmware Version 1.14.1 to Version 1.14.2.

This release (V1.14.2) is available on Chiron's reflash server with immediate effect. Due to normal manufacturing lead times, it will be introduced into new shipments over the course of the next few months. However, all IRIS Touch diallers can be upgraded by connecting them over IP to our reflash server, so you can be sure of having all the latest facilities, even if you have already taken delivery of the dialler. This can be done prior to install, at installation and commissioning or even after install.

Changes in this Release

IRIS Remote Service App – new features

1. A change has been made so an alarm event transmission triggers a poll call which in turn will trigger connection of an IRIS Remote Service session. Some customers have indicated that they wish to use a long polling interval to minimise GPRS transmission costs, but this has the disadvantage that remote access using the IRIS Remote Service App can take some time to start as it is triggered by the dialler polling. This new feature means that a user on site triggering an event transmission, such as a test alarm or a service call, can be used to enable a Remote Service connection straight away. This feature also provides conformance to EN regulations for upload/download where the upload/download is to be initiated from the monitored site.

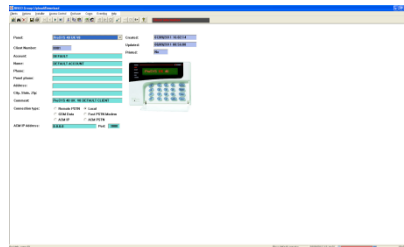


Chiron Security Communications Ltd

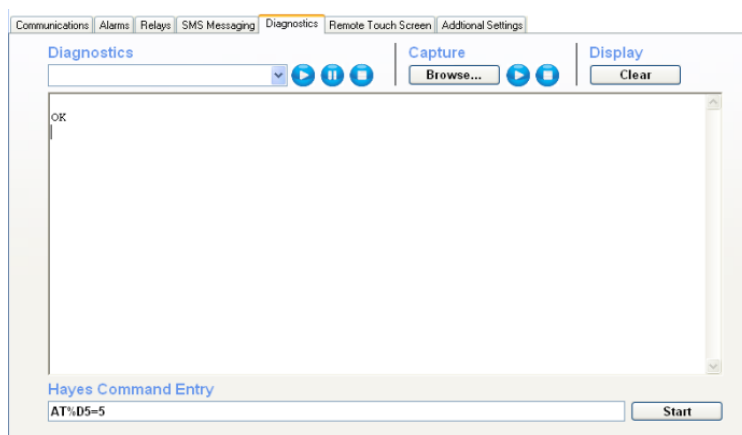
Wyvols Court, Swallowfield, Reading
Berkshire RG7 1WY, United Kingdom
Telephone: +44 0118 988 0228
Facsimile: +44 0118 988 1055
www.chironsc.com
Email: sales@chironsc.com

Registered office number: 6031811
2nd Floor, Aquis House, 49-51 Blagrove Street
Reading, Berkshire RG1 1PL United Kingdom
Chiron Security Communications Ltd
part of the Chi Holding group of companies 

- Support for Risco panel upload/download is now extended to working over GPRS as well as over Ethernet. Note – for operation over GPRS, the receive timeout in the Risco UD software should be set to 2 seconds minimum. This timeout can be set in the latest Risco software (3.2.7.3) in the 'GeneralSettings.ini' file.



- Support for Bosch 7400 panels using the Touch dial capture port. Note – this requires the setting %D5 in the Touch dialler to be set to a value of 5, which can be performed via USB and Chiron's IRIS Dialler Configuration software.



This configuration will be performed automatically by the IRIS Remote Service App in the next releases of IRIS Secure Apps.

Serial port monitoring

When software version 1.14.1 was introduced a situation was identified where IRIS Touch diallers communicating with the alarm panel via the RS232 interfaces could report 'Serial Port Fault' when the connection was operating correctly. This release solves this issue.

Pin input tamper monitoring

On Touch 6xx series diallers which are generally used with serial bus connections to an alarm panel, the monitoring of the 4 inputs for tamper has been changed so it is now disabled by default. This prevents situations where the Touch dialler has been configured correctly from the alarm panel and yet the status LED flashes to indicate an input tamper fault.

Note, tamper detection can be enabled using Chiron's Dialler Configuration software and will be set automatically for inputs 1 and 2 if the EN54-21 Fire mode is selected.

GPRS Attachment

This note applies to the previous release (1.14.1). By default GPRS network attachment is permanently enabled, rather than being enabled only when an outgoing call is to be made. It has been found that this enhances the speed of call setup and also allows incoming GPRS calls when a fixed IP address SIM card is being used.

Please note:

Diallers upgraded with this software will need to be defaulted for this feature to take effect.

There are no implications on traffic or GPRS transmission costs with this feature being enabled.

How to Reflash

Connection to the reflash server can be instigated from the installer menu, Settings->Reflash:



The reflash IP address is set by default to Chiron's reflash server (195.59.117.164) and does not need to be changed unless another reflash server is to be used.